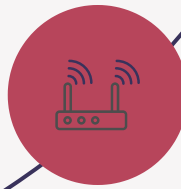


Product Datasheet PR1KC640

5G Combo MIMO SMA Antenna



Experience high-speed connectivity with this powerful 5G combo MIMO SMA antenna



MIMO Technology

With state-of-the-art MIMO technology, this antenna provides ultra-fast data transmission and low latency, making it ideal for demanding applications.

Enhanced Location Accuracy

Combined with a high-performance GNSS system, this antenna ensures accurate and stable positioning for your mobile and IoT devices.

Weatherproof Design

Designed for outdoor use, this antenna is built to withstand harsh environmental conditions and offers reliable performance in extreme temperatures.

TECHNICAL DATA

5G MOBILE MIMO ANTENNA

Frequency range	617 - 960/ 1710 - 2690/ 2900 - 4200 MHz
Polarization	Linear
Gain	4.0 dBi
V.S.W.R	≤3.0
Impedance	50 Ω
Connector type and count	4x SMA Male

GNSS ANTENNA

Frequency range	1164-1300/ 1559-1610 MHz
Polarization	RHCP
Supply voltage	3 - 12 VDC
LNA Gain	40 ± 2 dB
V.S.W.R	≤2.0
Impedance	50 Ω
Current Consumption	≤60 mA
Connector type and count	SMA Male

WIFI MIMO ANTENNA

Frequency range	2400 - 2483.5/ 4900 - 5925 MHz
Polarization	Linear
Gain	4.0 dBi
V.S.W.R	≤2.5
Impedance	50 Ω
Connector type and count	2x RP SMA Male

MECHANICAL ENVIRONMENTAL

Mounting method	Screw
Radome ingress projection rating	IP67 (exclude cable outlet)
Radome material	UV-Resistant ABS/PC
Weight	960 ± 30 g
Housing dimensions	189 x 182 x 85 mm
Cable	7 x LMR100, 3000 mm
Recommended mounting dimensions	Hole ø28 mm, panel thickness MAX 8 mm
Operating temperature	-40 °C - +85 °C
RoHS Compliant	✓